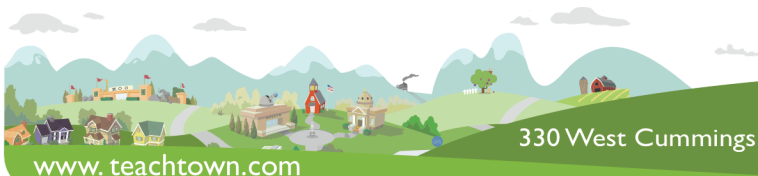
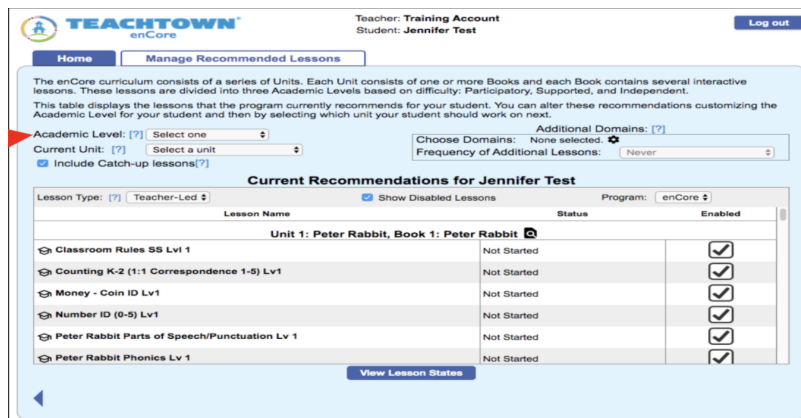
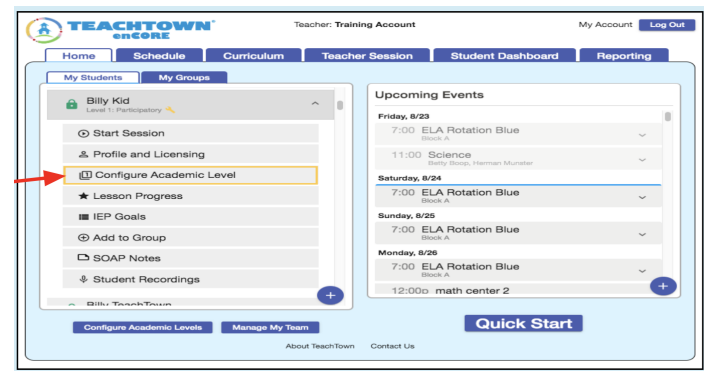
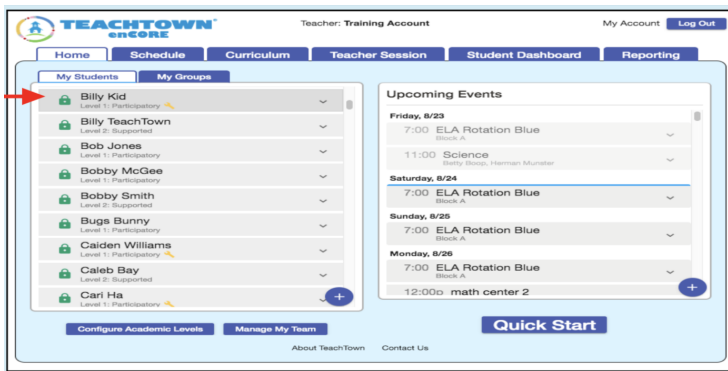


TeachTown enCORE Step Three to Get Started

How to Set Levels and Units for Students

Select a student in your account.

- ☐ Select Configure Academic Level from the drop-down
- ☐ Select the Level and Unit for the student
- ☐ Complete these steps for ALL of your students



How to Set Passwords and Session Lengths for Students

- ☐ Select Manage at the bottom left side of the screen
- ☐ Select the Manage My Students
- ☐ Select Manage Credentials
 - o To set a Username and Password
- ☐ Select Manage Session Length Settings
 - o To set the number of minutes your student(s) will work in the program
- ☐ Complete these steps for ALL of your students

